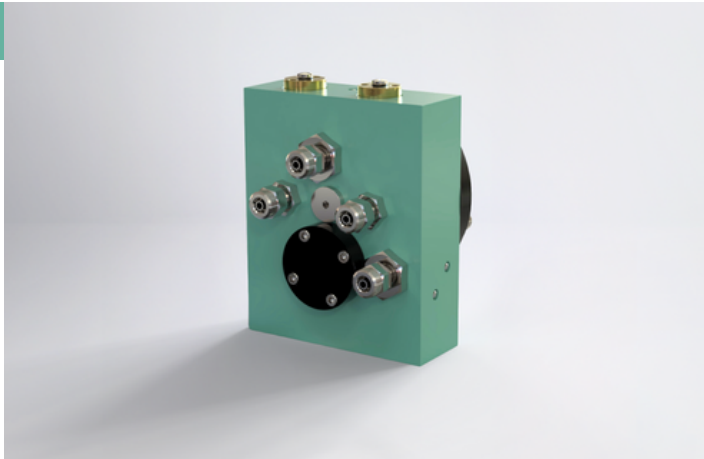


BJ1 Gas Mixing Valve

Designed to accurately mix 2 gases in a single mixed gas stream in a fully homogenous way.

The BJ1 gas mixing valve is designed for low-flow inert gas applications,



Welding & manufacturing



Inerting & tank blanketing



Heat Treatment & Metalworking



Food Processing & Packaging



Beverage Dispensing

DETAIL

VALUE

| | |
|-----------------|--|
| Product Name | BJ1 |
| Product Type | Gas Mixing Valve / Blender |
| Supply Gases | All commonly used industrial gases |
| Manufactured by | BSL Gas Technologies Ltd |
| Telephone | +44 (0)1634 661100 |
| Email | solutions@bslgastech.com |
| Address | 101 Laker Rd, Chatham, Rochester ME1 3QX |

KEY USE POINTS

- Up to 3 mixed gas outlets available.
- Pre-set and certified for optimal mixed gas configurations.
- Accurate gas mixing at pressures up to 30 bar g.
- Customisable gas mix ratios, tailored to your applications.
- Safety interlock to protect your process - if a supply gas is lost, no gas will pass through the panel.

PARAMETER

VALUE

| | |
|---------------------------------------|--|
| Dimensions | 125 mm x 110 mm x 60 mm |
| Weight | 1.8 to 4.2 kg |
| Outlet Options | Up to 3 mixed gas ratios |
| Design Pressure | Up to 30 bar g |
| Operating Temperature | -20°C to +50°C |
| Connections | G3/8" |
| Gas Mix Ratio | All common ratios |
| Component Gas Nominal Concentration % | Tolerances specified in BS EN ISO 14175:2008 |

FEATURES AND OPERATION

- The TMB series of gas mixers ensures accurate gas blending across a wide range of industrial applications, making it ideal for environments requiring the consistent mixing of two inert gases.

| MODEL | GASES | RANGE |
|-------------|--------------------------|------------------------|
| TMB | Common industrial gases | 2-22% / 5-40% / 10-85% |
| TMB (Brass) | Oxygen (O ₂) | 2-22% / 5-40% / 10-85% |

